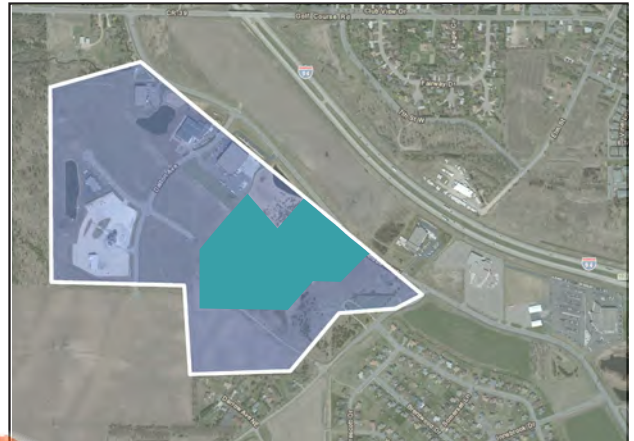


Wright County Employment Profile	Percent of Population Employed
Civilian Employed Population (16+ yrs)	64,309 employed
Construction	19 %
Manufacturing	17 %
Wholesale Trade	13 %
Retail Trade	9.2 %
Transportation Warehousing	9 %
Information	7.6 %
Finance, Insurance, Real Estate	6 %
Professional, Scientific, Management	4.5 %
Educational Services, Health Care, Social Services	4.4 %
Arts, Entertainment, Recreation	4 %
Public Administration	1.5 %
Agriculture, Forestry, Fishing and Hunting, Mining	1.4 %
Other	1.5%



Certified Shovel Ready Development Site

- 6.69 Acre Development Site
- 5.5 Developable Acres
- Access to I-94 and Trunk Highway 25
- Regional ponding provided
- Utilities provided by Excel Energy and Centerpoint Energy
- Fiber optics - available to site
- City sewer and water
- Zoning: I-1 Light Industrial

Source: American Community Survey (2007-2011 5 yr Estimates)

