

**2J. Consideration of approving Change Order #1 for the School Boulevard Safe Routes to School Project in the amount of \$31,602.25 and PUD Adjustment conditions modification (updated)**

<b>Prepared by:</b> PW Director/City Engineer	<b>Meeting Date:</b> 5/22/2023	<input checked="" type="checkbox"/> <b>Consent Agenda Item</b> <input type="checkbox"/> <b>Regular Agenda Item</b>
<b>Reviewed by:</b> Finance Director, Community Development Director	<b>Approved by:</b> City Administrator	

**ACTION REQUESTED**

Motion to approve Change Order #1 for the School Boulevard Safe Routes to School Project for a total amount of \$31,602.25 and a modification of the approved High School PUD Adjustment conditions to allow for surface material flexibility in the parking stall removal area.

**PREVIOUS COUNCIL ACTION**

- December 30, 2020:** City Council authorized the submission of the FY 2025 Transportation Alternatives grant for the completion of School Boulevard Safety improvements.
- September 13, 2021:** City Council authorized staff to solicit proposals for engineering services.
- November 2, 2021:** City Council authorized WSB to provide engineering services for a total cost of \$74,777.
- November 28, 2022:** City Council approved the plans and specs and authorized the advertisement for bids.
- January 23, 2023:** City Council authorized approving a contract with New Look Contracting Inc. for a total amount of \$873,960.75.
- May 8, 2023:** City Council approved a PUD adjustment to the High School site.

**REFERENCE AND BACKGROUND**

The Monticello School District approached City staff to investigate solutions to help alleviate congestion primarily during school dismissal for their School Boulevard entrance to the Monticello High School. At school dismissal, vehicles waiting in the single entrance lane to pick up their student were seen backed up onto School Boulevard. The backup caused a delay on School Boulevard and safety concerns for vehicles traveling on School Boulevard and for those

trying to exit the High School entrance onto School Boulevard. Additional vehicle storage can be accommodated by providing an additional entrance lane.

The additional lane requires removing and replacing the curb and gutter on the easterly edge of the entrance and removing the parking stalls within the parking lot just south of the high school entrance. Some of the stalls proposed to be removed are currently signed as ADA stalls, so these will be replaced in the main parking lot with new ADA-compliant curb ramps and sidewalk connecting to the entrance. In addition, this change order revises the project in the Eastview Elementary School area; a portion of curb and gutter originally proposed to be removed and replaced will now remain.

Along with consideration of Change Order #1, the school district is requesting flexibility in the materials for their recent PUD adjustment. At the regular meeting on May 8, Council approved a PUD adjustment to replace the removed parking stalls with green space between the new curb and sidewalk. The school asked for flexibility to install concrete in this area for maintenance purposes as well as for potential drop-off traffic at the location.

New Look Construction, Inc., who was awarded this project, has agreed to complete this work honoring the unit-bid prices from the contract.

Tree removal for the project has been completed and additional construction is planned to start in June 2023 with substantial completion in Sept. 2023.

- I. **Budget Impact:** The 2023 budget includes \$925,000 for this project; \$150,000 funded from the Street Lighting Fund, \$375,000 from the Park & Pathway Improvement Fund, and the remaining \$400,000 from the Capital Projects Fund. MNDOT increased our grant award amount from \$330,051 to \$500,000 for this project and Monticello School District has committed \$55,000 in matching funds as well.
- II. **Staff Workload Impact:** WSB and City staff will continue to be involved throughout various steps of the project development.
- III. **Comprehensive Plan Impact:** The Monticello 2040 Vision + Plan includes Value statements which encourage safe communities, with balanced and connected transportation and trail networks. The Mobility Chapter of the Plan cites as a priority the “Continued evaluation of collector street network improvements for safety, intersection and congestion improvements.” Further, the Implementation Chapter of the Plan offers a strategy specific to Safe Routes: “Strategy 5.2.3 - Work with Wright County and Monticello the School District to implement and address the issues identified in the Monticello Safe Routes to School Plan.”

**STAFF RECOMMENDED ACTION**

City staff recommends approval of Change Order #1 in the amount of \$31,602.25. Addressing the concerns about the Monticello High School entrance is a logical adjustment to the existing project on School Boulevard this summer.

**SUPPORTING DATA**

- A. Change Order #1
- B. Change Order Plan Sheets





<b>SP 222-591-001</b>		<b>Minn. Project No. TA 8622 (248)</b>			<b>Change Order No. 1</b>	
Project Location: School Boulevard Safe Routes To School Project						
Local Agency: City of Monticello				Local Project No.		
Contractor: New Look Contracting, Inc.				Contract No. 019573-000		
Contractor Address: 14045 Northdale Blvd. Rogers, MN 55374						
<b>Total Change Order Amount: \$31,602.25</b>						
Description: Monticello School Entrance Widening & ADA Improvements. In discussions with the Local School District vehicle access improvements as well as ADA improvement should be made under this contract. The Engineer has determined that the improvement to widen the access road and improve ADA facilities to the High School shall be done at contract bid prices. This change also includes eliminating the need to replace the B612 Curb & Gutter at Eastview Education Center.						
<b>Estimate Of Cost: (Include any increases or decreases in contract items, any negotiated or force account items.)</b>						
Group/Funding Category**	Item No.	Description	Unit	Unit Price	+ or - Quantity	+ or - Amount \$
Local - School Participating	2102.503	PAVEMENT MARKING REMOVAL	L F	\$1.00	870	\$870.00
Local - School Participating	2102.518	PAVEMENT MARKING REMOVAL	S F	\$3.00	25	\$75.00
Local - School Participating	2104.503	SAWING BIT PAVEMENT (FULL DEPTH)	L F	\$2.00	300	\$600.00
Local - School Participating	2104.503	REMOVE CURB & GUTTER	L F	\$6.00	462	\$2,772.00
Local - School Participating	2104.504	REMOVE BITUMINOUS PAVEMENT	S Y	\$4.25	264	\$1,122.00
Local - School Participating	2106.507	EXCAVATION - COMMON (P)	C Y	\$14.00	240	\$3,360.00
Local - School Participating	2211.507	AGGREGATE BASE (CV) CLASS 5	C Y	\$36.00	78	\$2,808.00
Local - School Participating	2360.509	TYPE SP 9.5 WEARING COURSE MIX (4,F)	TON	\$177.50	70	\$12,425.00
Local - School Participating	2521.518	6" CONCRETE WALK	S F	\$15.50	330	\$5,115.00
Local - School Participating	2521.518	4" CONCRETE WALK	S F	\$6.50	490	\$3,185.00
Local - School Participating	2521.602	DRILL & GROUT REINF BAR (EPOXY COATED)	EACH	\$31.50	12	\$378.00
Local - School Participating	2531.503	CONCRETE CURB & GUTTER DESIGN B612	L F	\$28.50	570	\$16,245.00
Local - School Participating	2531.618	TRUNCATED DOMES	S F	\$70.00	48	\$3,360.00
Local - School Participating	2582.503	4" SOLID LINE MULTI COMP GR IN	L F	\$3.00	2000	\$6,000.00
SP 222-591-001	2104.503	REMOVE CURB & GUTTER	L F	\$6.00	-514	(\$3,084.00)
SP 222-591-001	2104.503	SAWING BIT PAVEMENT (FULL DEPTH)	L F	\$2.00	-518	(\$1,036.00)
SP 222-591-001	2104.504	REMOVE BITUMINOUS PAVEMENT	S Y	\$4.25	-115	(\$488.75)
SP 222-591-001	2360.509	TYPE SP 9.5 WEARING COURSE MIX (4,F)	TON	\$177.50	-28	(\$4,970.00)
SP 222-591-001	2360.509	TYPE SP 12.5 NON WEAR COURSE MIX (4,B)	TON	\$177.50	-14	(\$2,485.00)
SP 222-591-001	2531.503	CONCRETE CURB & GUTTER DESIGN B612	L F	\$28.50	-514	(\$14,649.00)
<b>Net Change This Change Order</b>						<b>\$31,602.25</b>

\*\*Group/funding category is required for federal aid projects



Due to this change, the contract time: (check one)	
<input checked="" type="checkbox"/> Is NOT changed	<input type="checkbox"/> May be revised as provided in MnDOT Specification 1806
Number of Working Days Affected by this Contract Change:	Number of Calendar Days Affected by this Contract Change:

Approved By Project Engineer:  Date: May 18, 2023

Print Name: Andy Plowman Phone: 612.360.1311

Approved By Contractor: \_\_\_\_\_ Date: \_\_\_\_\_

Print Name: \_\_\_\_\_ Phone: \_\_\_\_\_

**DSAE Portion:** The State of Minnesota is not a participant in this contract. Signature by the District State Aid Engineer is for **FUNDING PURPOSES ONLY** and for compliance with State and Federal Aid Rules/Policy. Eligibility does not guarantee funds will be available.

This work is eligible for:  Federal Funding     State Aid Funding     Local funds

District State Aid Engineer: \_\_\_\_\_ Date: \_\_\_\_\_



GUTTERLINE POINTS			
POINT NO.	X	Y	ELEV
101	526739.11	212741.95	960.00
102	526739.23	212735.96	959.94
103	526739.39	212727.96	959.83
104	526739.51	212721.96	959.77
105	526750.06	212728.17	960.25

**LEGEND**

X" CURB HEIGHT

XXX CONTROL POINTS AT GUTTER FLOW LINE

TRUNCATED DOMES (SEE STANDARD PLATE 7038)

CONSTRUCT CONCRETE CURB & GUTTER

LANDING AREA - 4' X 4' MIN. DIMENSIONS AND MAX 2.0% SLOPE IN ALL DIRECTIONS

INDICATES PEDESTRIAN RAMP - SLOPE SHALL BE BETWEEN 5.0% MINIMUM AND 8.3% MAXIMUM IN THE DIRECTION SHOWN AND CROSS SLOPE SHALL NOT EXCEED 2.0%

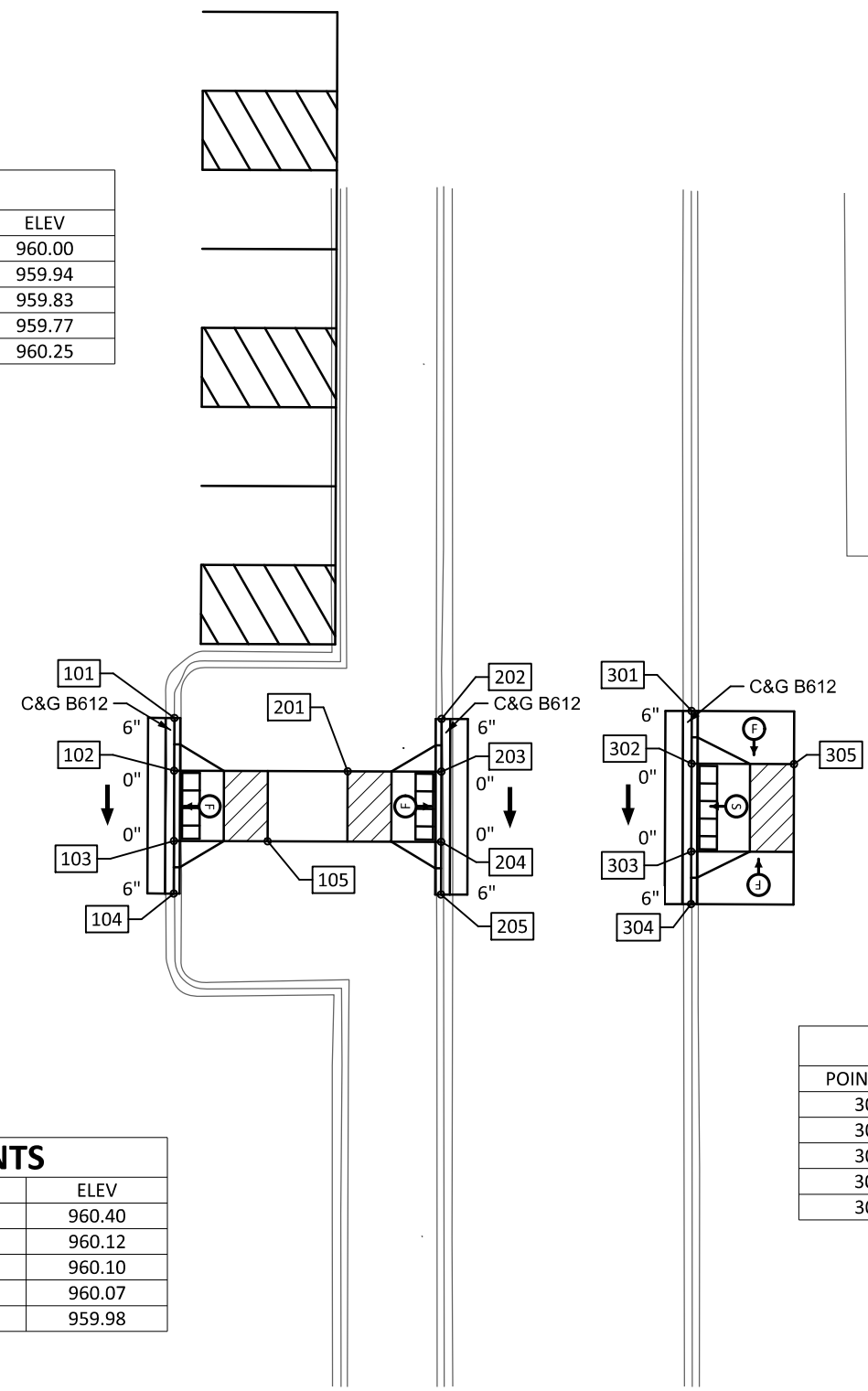
INDICATES PEDESTRIAN RAMP - SLOPE SHALL BE GREATER THAN 2.0% AND LESS THAN 5.0% IN THE DIRECTION SHOWN AND CROSS SLOPE SHALL NOT EXCEED 2.0%

DRAINAGE FLOW ARROW

MAX. 2.0% SLOPE IN ALL DIRECTIONS

CATCH BASIN

NOTE: ALL INITIAL LANDINGS TO BE POURED SEPERATELY. DRILL & GROUT REINFORCEMENT BARS.



GUTTERLINE POINTS			
POINT NO.	X	Y	ELEV
201	526759.00	212736.35	960.40
202	526769.54	212742.57	960.12
203	526769.66	212736.57	960.10
204	526769.82	212728.57	960.07
205	526769.94	212722.57	959.98

GUTTERLINE POINTS			
POINT NO.	X	Y	ELEV
301	526798.00	212744.14	960.65
302	526798.12	212738.14	960.62
303	526798.32	212728.14	960.51
304	526798.43	212722.14	960.43
305	526808.79	212738.36	961.30

DATE: 5/10/2023 2:55:29 PM  
PATH & FILENAME: K:\19573-000\Cad\Plan\19573-000\_ped-changeorder.dgn

NO.	DATE	BY	CHK	REVISIONS

Design By: MKV  
 Plan By: BAC  
 Checked By: AJP  
 Approved By: AJP

I HEREBY CERTIFY THAT THIS PLAN WAS PREPARED BY ME OR UNDER MY DIRECT SUPERVISION AND THAT I AM A DULY LICENSED PROFESSIONAL ENGINEER UNDER THE LAWS OF THE STATE OF MINNESOTA.

ANDREW J. PLOWMAN, PE  
 DATE: 5/10/2023 LICENSE NO. 44200

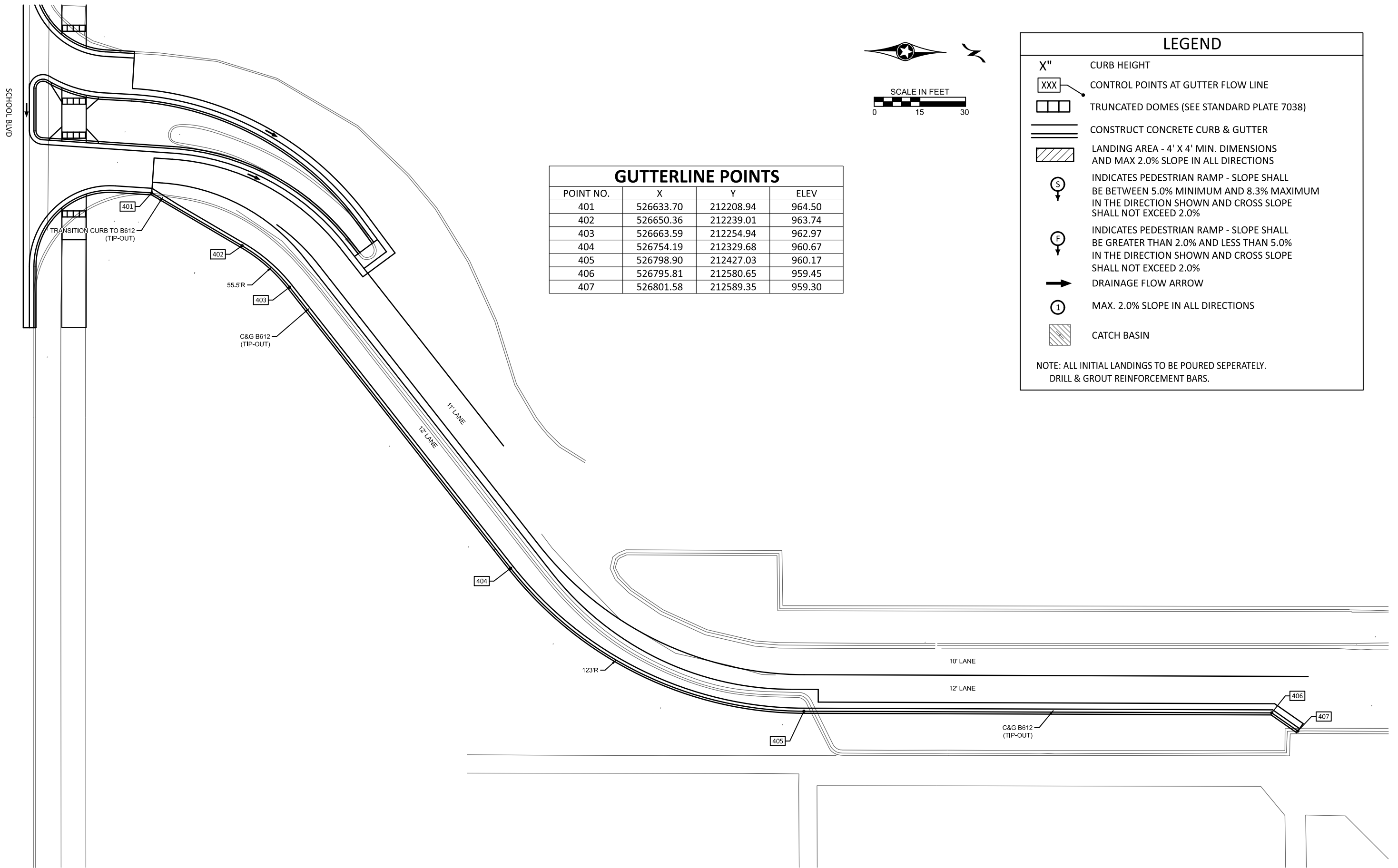


**School Blvd Trail Extension**  
 Monticello, Minnesota

MONTICELLO, MINNESOTA

**PEDESTRIAN RAMP DETAILS**  
 S.P. 222-591-001

SHEET  
 1  
 OF  
 2  
 SHEETS



GUTTERLINE POINTS			
POINT NO.	X	Y	ELEV
401	526633.70	212208.94	964.50
402	526650.36	212239.01	963.74
403	526663.59	212254.94	962.97
404	526754.19	212329.68	960.67
405	526798.90	212427.03	960.17
406	526795.81	212580.65	959.45
407	526801.58	212589.35	959.30

### LEGEND

- X" CURB HEIGHT
- XXX CONTROL POINTS AT GUTTER FLOW LINE
- TRUNCATED DOMES (SEE STANDARD PLATE 7038)
- CONSTRUCT CONCRETE CURB & GUTTER
- LANDING AREA - 4' X 4' MIN. DIMENSIONS AND MAX 2.0% SLOPE IN ALL DIRECTIONS
- INDICATES PEDESTRIAN RAMP - SLOPE SHALL BE BETWEEN 5.0% MINIMUM AND 8.3% MAXIMUM IN THE DIRECTION SHOWN AND CROSS SLOPE SHALL NOT EXCEED 2.0%
- INDICATES PEDESTRIAN RAMP - SLOPE SHALL BE GREATER THAN 2.0% AND LESS THAN 5.0% IN THE DIRECTION SHOWN AND CROSS SLOPE SHALL NOT EXCEED 2.0%
- DRAINAGE FLOW ARROW
- MAX. 2.0% SLOPE IN ALL DIRECTIONS
- CATCH BASIN

NOTE: ALL INITIAL LANDINGS TO BE POURED SEPERATELY. DRILL & GROUT REINFORCEMENT BARS.

DATE: 5/10/2023 2:55:29 PM  
PATH & FILENAME: K:\19573-000\Cad\Plan\19573-000\_ped-changeorder.dgn

NO.	DATE	BY	CHK	REVISIONS

Design By: MKV  
 Plan By: BAC  
 Checked By: AJP  
 Approved By: AJP

I HEREBY CERTIFY THAT THIS PLAN WAS PREPARED BY ME OR UNDER MY DIRECT SUPERVISION AND THAT I AM A DULY LICENSED PROFESSIONAL ENGINEER UNDER THE LAWS OF THE STATE OF MINNESOTA.

ANDREW J. PLOWMAN, PE  
 DATE: 5/10/2023 LICENSE NO. 44200



**School Blvd Trail Extension**  
 Monticello, Minnesota

MONTICELLO, MINNESOTA

**INTERSECTION DETAILS**  
 S.P. 222-591-001

SHEET  
 2  
 OF  
 2  
 SHEETS